

# Surface preparation systems

## Spiderjet M and Spiderjet V

Highly mobile, self-adhesive surface preparation system with vacuum system

Great area performance

Safe operation

Extraction with filter

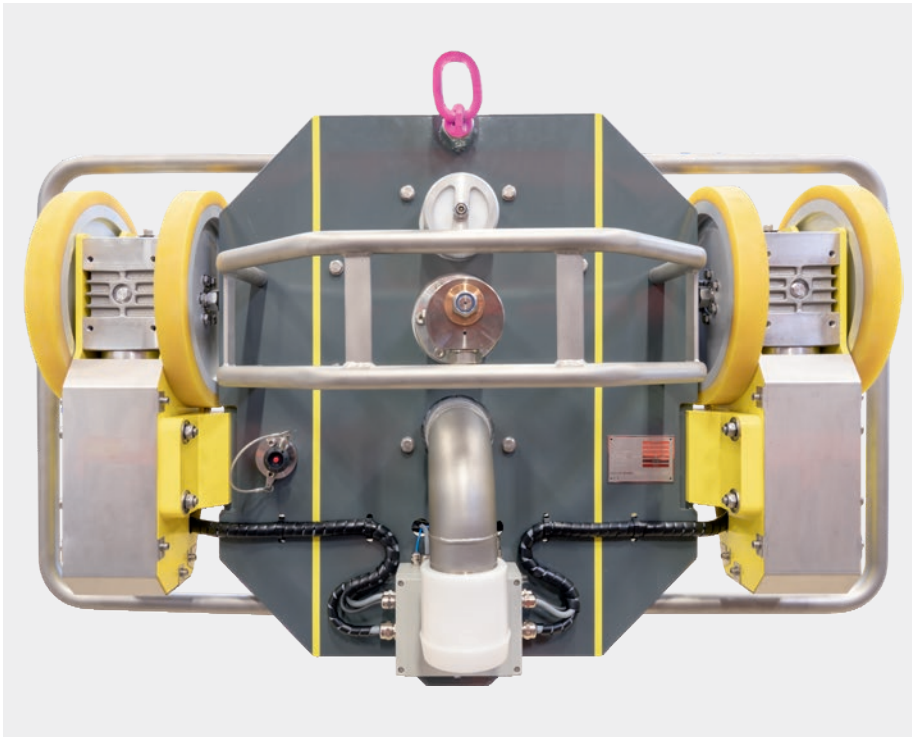
Highly mobile

Other versions

Remote controlled

# SPIDERJET – SURFACE PREPARATION SYSTEMS

## Spiderjet® V – vacuum



The Spiderjet V is held on the work surface by a vacuum, which at the same time suctions off the removed waste material and waste water.



Separation tank



Vacuum collector



### Technical data - Spiderjet V:

**Working width:** 374 mm  
**Operation pressure:** up to 3000 bar  
**Flow rate:** up to 50 l/min  
**Weight:** 95 kg  
**Max. operation speed:** 0–7 m/min

### Vacuum:

Depending on the nature of the surface  
 approx. 0.5 bar

Suction connection: DN 100

**Suction Power @ 500 mbar:**  
**Max. vacuum:**  
**Vacuum generator:**  
**Electric motor:**

**Length:**  
**Width:**  
**Height:**

### Separation tank:

**Capacity:**  
**Length**  
**Width:**  
**Height:**

### Vacuum collector - 1900

1900 m<sup>3</sup>/h  
 500 mbar  
 Roots - rotary piston blower  
 45 kW

2335 mm  
 1500 mm  
 2380 mm

### Vacuum collector - 660

660 m<sup>3</sup>/h  
 500 mbar  
 Roots - rotary piston blower  
 15 kW

1750 mm  
 970 mm  
 2180 mm

3 m<sup>3</sup>  
 2350 mm  
 2350 mm  
 4200 mm



## Spiderjet® M – Magnet

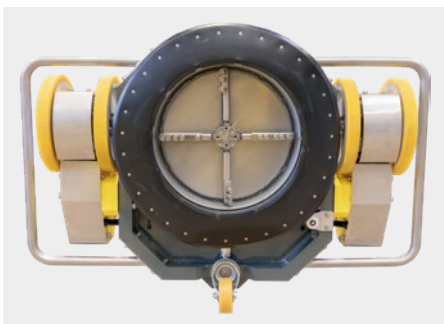
The Spiderjet M is attached to the work surface with permanent magnets and the vacuum system, which also retrieves all waste water and removed solids.

### Technical data - Spiderjet M:

Working width:	374 mm
Operation pressure:	up to 3000 bar
Flow rate:	up to 50 l/min
Weight:	113 kg
Max. operation speed:	0–7 m/min

### Technical data relevant for both versions:

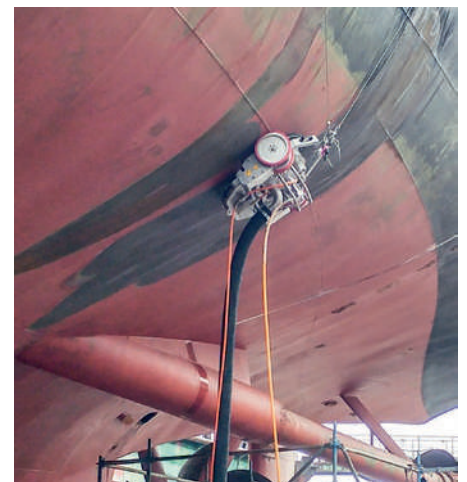
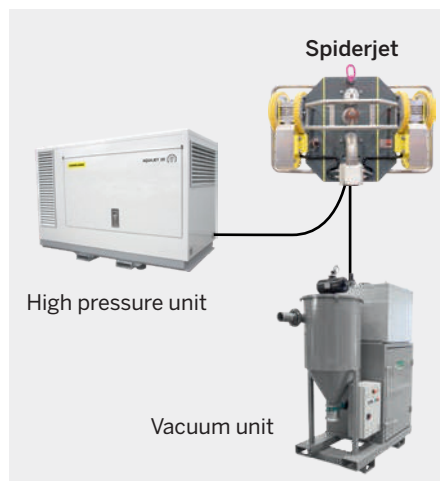
- Maximum manoeuvrability via two individually, electrically driven wheels
- Radio remote control
- Secured by a double fall arrest system
- Special nozzle layout ensures uniform distribution of the high pressure water across the working width
- Nozzle holder is self-propelled due to the reaction force of the high pressure water jets
- Rotation speed can be varied with the spraybar angle
- Rotary joint with dynamic high pressure seals, leakage-free, long service intervals



Drive system with suction dome



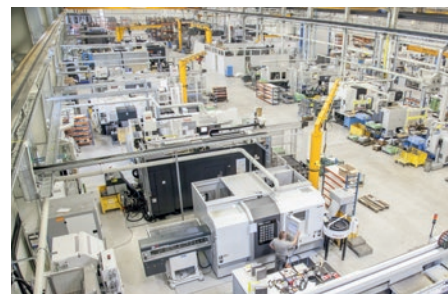
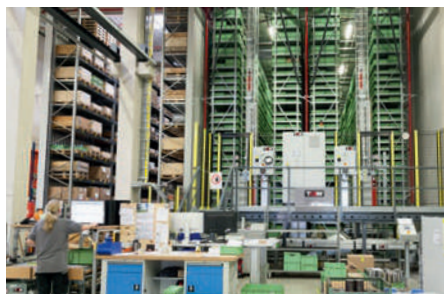
Radio remote control



Preparation of the ship hull bottom



## Factory Oelde



### Certifications

DIN EN ISO 9001  
DIN EN ISO 14001  
DIN EN ISO 50001  
BS OHSAS 18001  
TÜV ATEX 2524 X  
ASME-U  
Achilles



## Hammelmann service worldwide

Subsidiaries in USA, China, Australia, Brazil, Spain, France, Switzerland and 40 agents and distributors worldwide.



Hammelmann GmbH

Carl-Zeiss-Straße 6-8  
59302 Oelde • Germany  
mail@hammelmann.de

Tel.: (0) 25 22 / 76 - 0  
Fax: (0) 25 22 / 76 - 140  
www.hammelmann.com

**HAMMELMANN®**