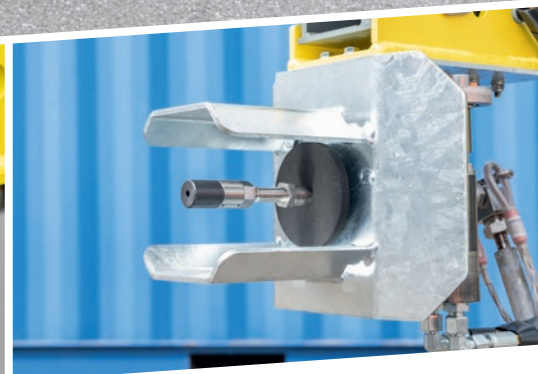
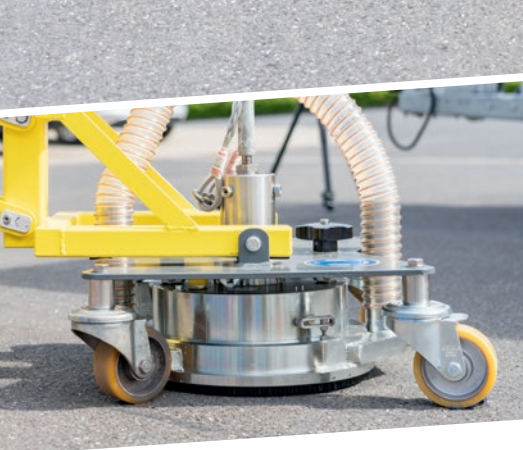
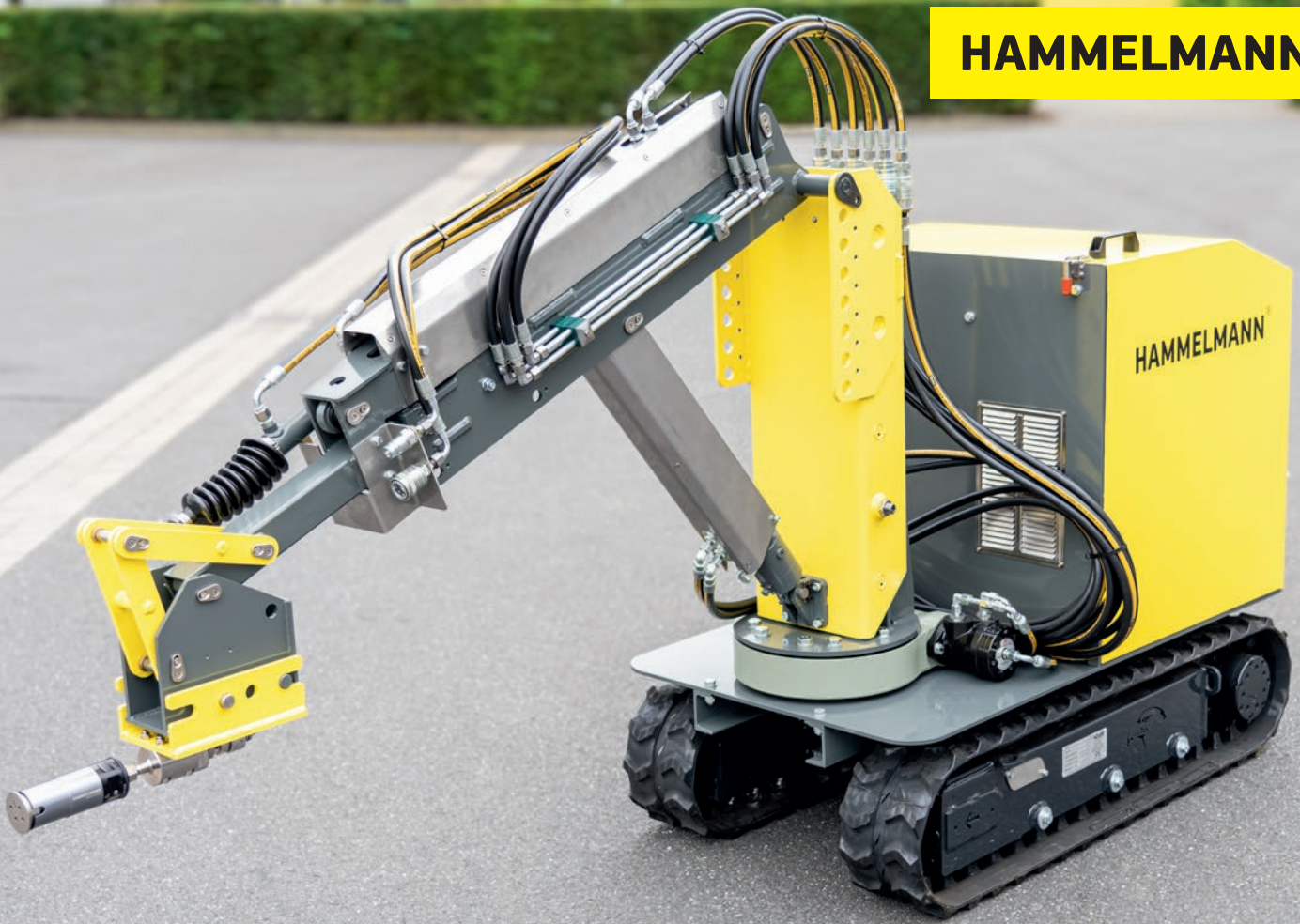


HAMMELMANN®



JETMASTER HIGH-PRESSURE APPLICATIONS ROBOT

For safe and flexible use in a wide variety of applications

Semi-automatic operation

Increased safety and ergonomics

Universal tool mount

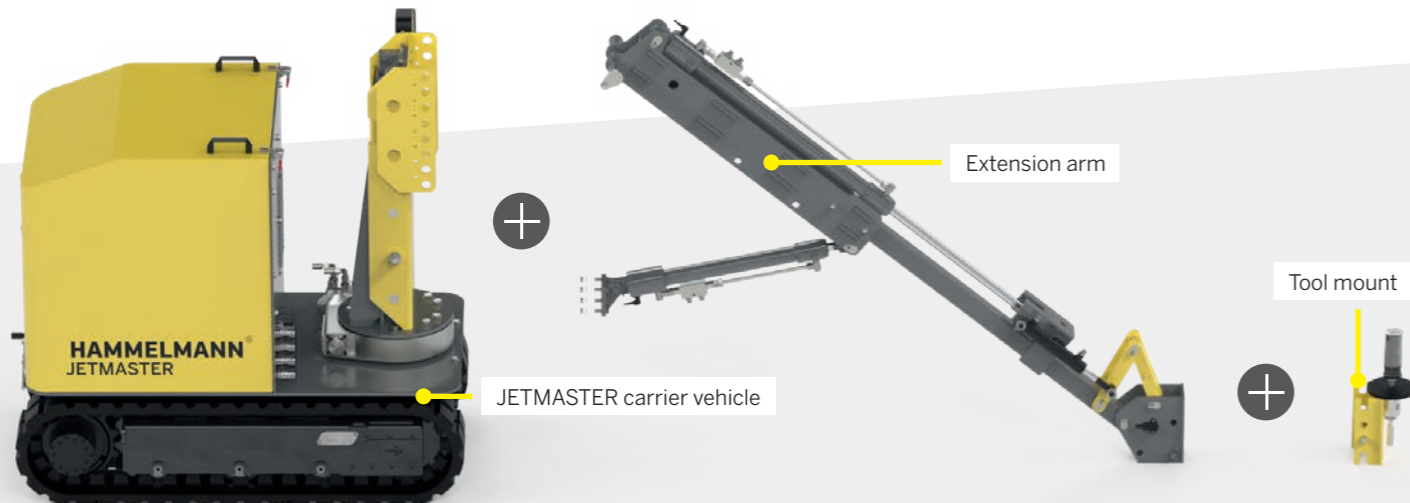
Wide range of applications

Compact Design

Maximum mobility

THE JETMASTER HIGH-PRESSURE APPLICATIONS ROBOT

The JETMASTER is a radio-controlled, semi-automatic work aid. Built on a mobile carrier vehicle the unit can be equipped with a flexible boom that can be used in a variety of ways, on which various water tools such as a MASTERJET rotary nozzle or an AQUABLAST® surface cleaner can be mounted, depending on the application. With its highly flexible working positions, the JETMASTER reliably eliminates recoil forces and is a real all-rounder, regardless of water pressure and flow rate - from cleaning and roughening to removing a wide variety of surfaces.



CARRIER VEHICLE

The base of the JETMASTER is a carrier vehicle with a powerful hydraulic drive and 2-speed gearshift. The mount for the extension arm has a large swivel range of +/- 120°.

EXTENSION ARM

A flexible and variable extension arm on which various water tools can be mounted. Thanks to the telescopic stroke, a working height of up to 3000 mm can be achieved.

TOOL MOUNT

The water tool is attached on the tool mount. This can be connected to the extension arm in different positions. A simple and quick adjustment to the working conditions is possible at any time.



AN UNBEATABLE COMBINATION!

In order to simplify the workflow, increase efficiency and relieve the operator, the JETMASTER is equipped with the following semi-automatic functions:

+ SWIVEL RANGE / WIPING FUNCTION

After activating the wiping function, the JETMASTER moves the water tool within the preset swivel range. The swivel range can be switched on as well as limited using the radio remote control. The forward feed is done by driving.

+ AUTOMATIC WALL DISTANCE

When working on walls, a function can be activated that automatically extends or retracts the telescope. The farther the tool is from the apex of the working radius, the farther the telescope will extend to allow for a consistent water jet distance from the wall. In addition, a parallel guide can be switched on so that the high-pressure water tool moves parallel to the surface during vertical adjustment. For this, the vertex of the working radius must be defined once.

+ SEMI-AUTOMATIC CLEANING ZONE

A cleaning zone can be created by defining 3 points. The JETMASTER can then cycle through the zone with the preset tool working width. This function can be used for floor and wall processing.

EFFICIENT REMOVAL OF CONCRETE AND MORE



www.hammelmann.com/removal

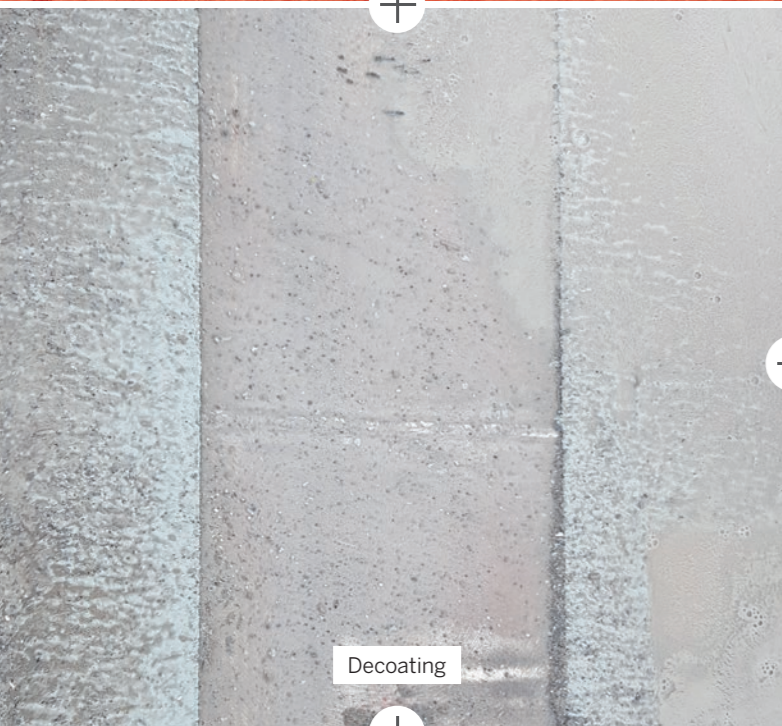
Efficient removal of concrete
in the Hammelmann test area



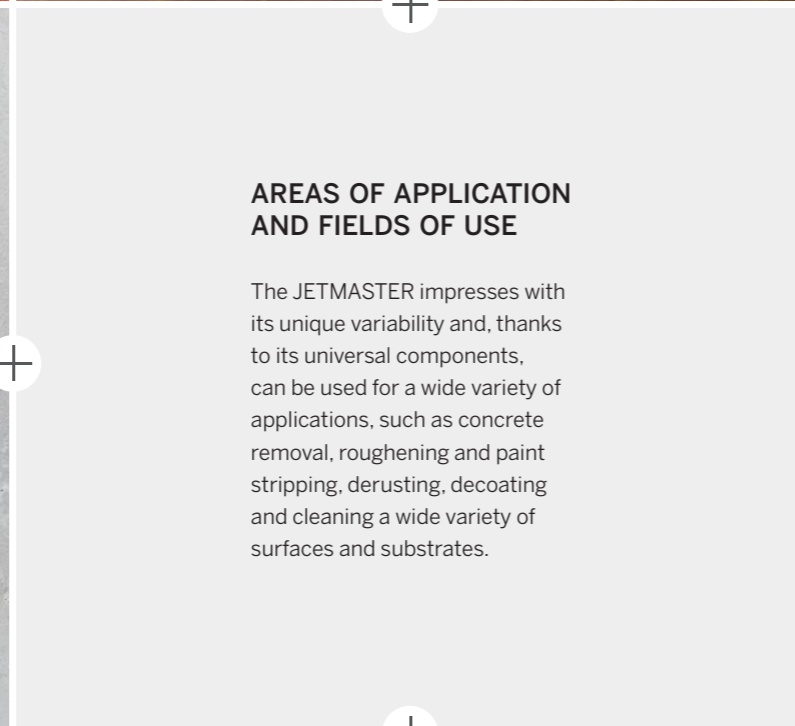
Paint removal



Cleaning tanks and vessels



Decoating

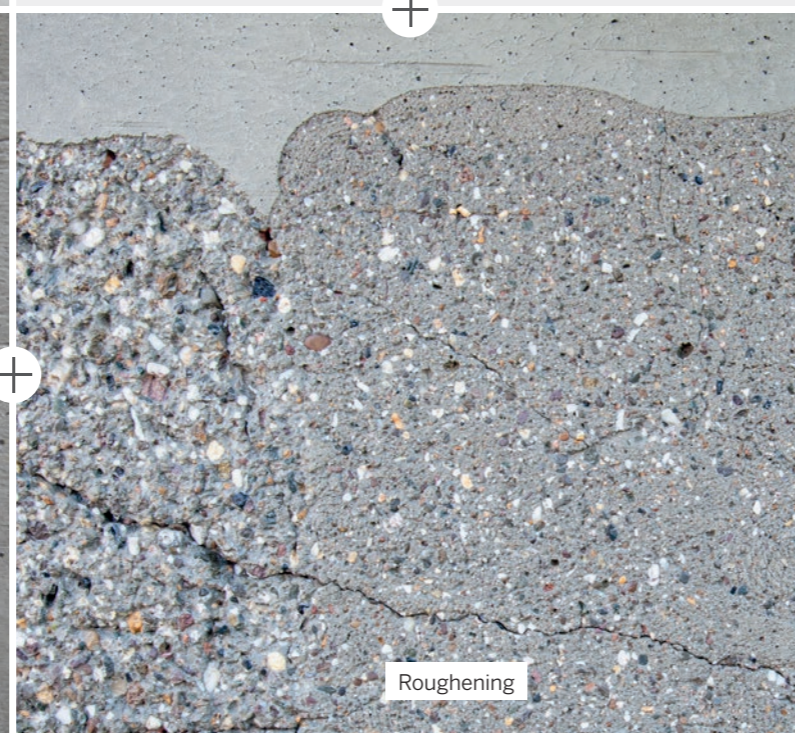


AREAS OF APPLICATION AND FIELDS OF USE

The JETMASTER impresses with its unique variability and, thanks to its universal components, can be used for a wide variety of applications, such as concrete removal, roughening and paint stripping, derusting, decoating and cleaning a wide variety of surfaces and substrates.



Concrete removal



Roughening



3000 mm
working height

1344 mm

1326 mm

725 mm

Extendable to
1125 mm

240° swivel range

Infinitely adjustable +/- 120°

Radio remote control



180° swivel angle

Infinitely adjustable +/- 90°

THE VERSATILE EXTENSION ARM

The extension arm can not only be adjusted in height thanks to the variable stroke, the tool mount of the extension arm can also be swiveled up or down by +/- 90°.

The tool mount can also be attached in different positions, so that it can be adapted to the working conditions easily and quickly. With the JETMASTER, almost all surfaces can be treated thoroughly and effectively.



Universally mountable

FOR A WIDE VARIETY OF WATER TOOLS AND UP TO ANY CHALLENGE!

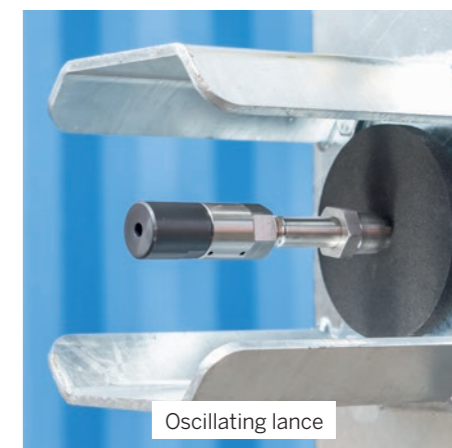
Thanks to the universal tool mount, a large selection of water tools can be connected to the JETMASTER. For example MASTERJET rotor jets, AQUABLAST® surface cleaners, hydraulically driven rotary nozzles, round and fan jet nozzles, and much more.



MASTERJET Rotor jet



AQUABLAST® Surface cleaner



Oscillating lance

TECHNICAL DETAILS

Recoil force	Weight	Speed - gear 1	Speed - gear 2
0 - 300 N	~ 940 kg	20 m/min	40 m/min
Oil type	Oil volume	Max. oil pressure	Engine power
HLP 46	50 l	200 bar	0,5 - 4 kW

DISCOVER MORE ERGONOMIC WORK TOOLS



JETBOY S

JETBOY S is an ergonomic water tool with an adjustable handle and a variable working height for a secure standing position when working overhead.

JETBOY L

You can adapt JETBOY L to a wide range of different work positions. For cleaning ceilings, floors, and corners.

JETBOY XL

JETBOY XL makes virtually effortless work possible. This results in a significantly greater area performance.



JETMATE

JETMATES are ergonomic, free-hanging working tools that can clean in all directions. Safe and less physical stress on the body thanks to recoil-free operation.

AQUABLAST® LINE

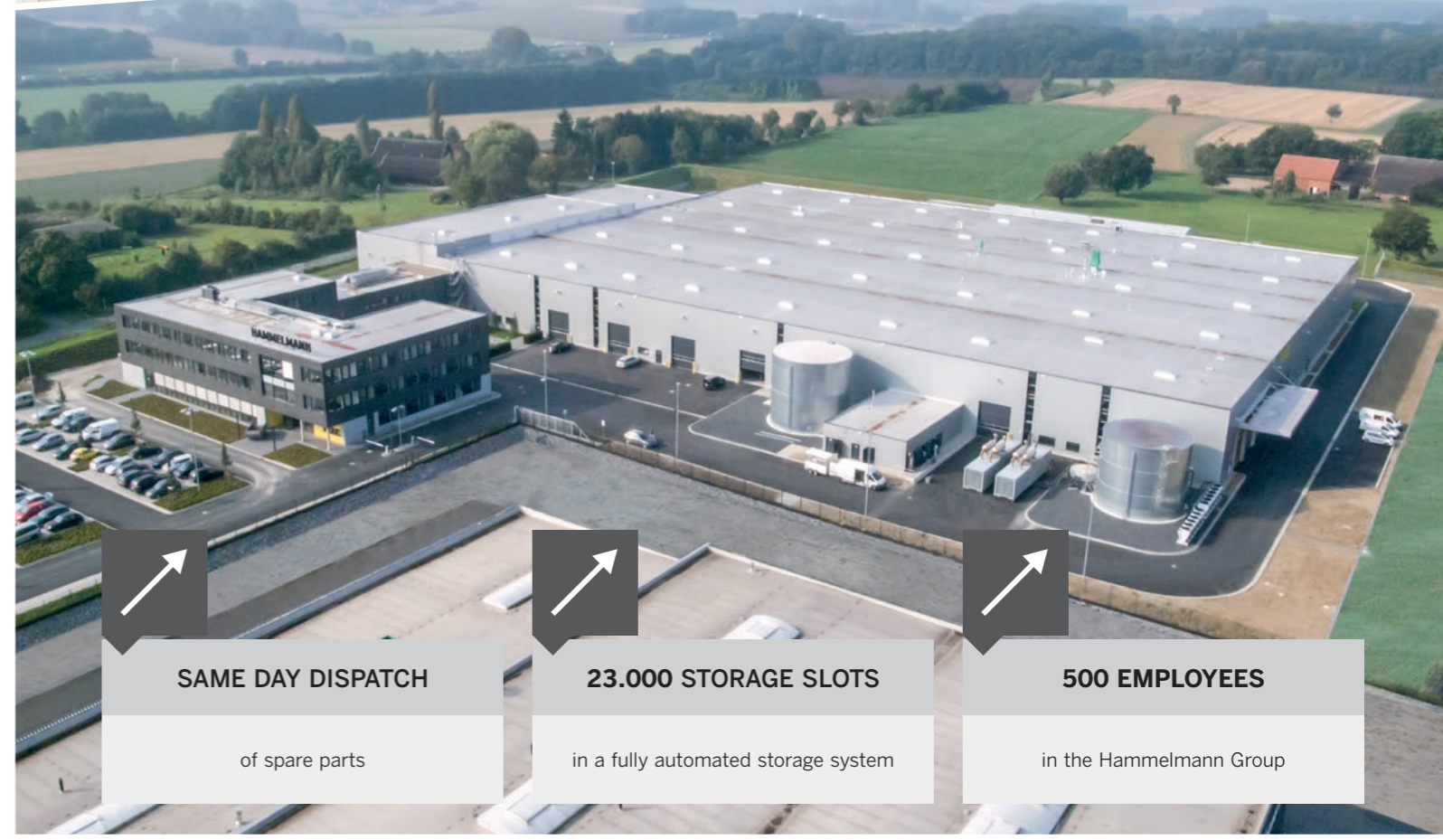
The AQUABLAST® Line is a device for carrier systems and is suitable for cleaning and decoating vertical or vertically inclined surfaces.

AQUABLAST® SURFACE CLEANER

The handheld floor cleaners are available as mechanical or electrical version and impress with great ergonomics and high-performance cleaning on different surfaces.

SPARE PARTS SERVICE IN A CLASS OF ITS OWN, AVAILABLE AROUND THE CLOCK

Hammelmann's unique spare parts service offers you many advantages - a state-of-the-art logistics center, same-day dispatch and short delivery times.



SAME DAY DISPATCH
of spare parts

23.000 STORAGE SLOTS
in a fully automated storage system

500 EMPLOYEES
in the Hammelmann Group

MAINTENANCE- / REPAIR SERVICE

+49 (0) 25 22 / 76 - 455
mail@hammelmann.de

SPARE PARTS SERVICE / SPARE PARTS SALES

+49 (0) 25 22 / 76 - 408
mail@hammelmann.de

24-HOUR SERVICE-HOTLINE

+49 (0) 171 / 470 72 65
(Outside regular service hours)



CERTIFICATES

- ISO 9001:2015
- ISO 14001:2015
- ISO 45001:2018
- ISO 50001:2018
- Achilles Certificate
- ASME Certificate
- SIR Certificate
- Others



The free Hammelmann app

For iOS, Android and your browser

Water Jetting Calculator: hammelmann.com/app

Hammelmann GmbH
Carl-Zeiss-Straße 6-8
D-59302 Oelde

☎ (0) 25 22 / 76 - 0
✉ mail@hammelmann.de
🌐 www.hammelmann.com



HAMMELMANN®